

air conditioners for
your home, shops, restaurants,
offices, small hotels...

www.daikineurope.com

MULTI MODEL APPLICATIONS



ABOUT DAIKIN

Daikin has a worldwide reputation based on over 80 years' experience in the successful manufacture of high quality air conditioning equipment for industrial, commercial and residential use.



Daikin Europe N.V.

ENVIRONMENTAL CONSCIOUSNESS

**In all of us,
a green heart**



Enhancing the present - safeguarding the future

Throughout the last 50 years or so the basic building blocks of life air, water and the earth - have been systematically subjected to increasing levels of pollution with little regard to their potentially devastating effects on future generations.

Recently however, concern has grown regarding climate changes, acid rain, water and air pollution and the constant degradation of Earth's natural resources. The very technology that created these problems is now being harnessed to halt and reverse them. Depletion of the ozone layer and global warming have been highlighted and are now being addressed. Government legislation prohibiting the use of toxic substances and the generation of pollutants has slowed down the destruction of the environment.

Daikin Europe is proud to have been pro active in this respect, closely following its Japanese parent in implementing policies that have often pre-empted official legislative codes and directives. As a result, a culture of "environmental management" has since 2001, played a key role in the company's day to day activities and development strategies.

Top management commitment is reflected in the establishment of a number of action plans, which are now strictly observed and implemented throughout the Daikin Group.

TABLE OF CONTENTS

Multi Model Applications	
• Air conditioning - create a sense of well-being	4
• The benefits of a Multi System	5
Indoor units	
• For residential use	6
• For small commercial use	7
Outdoor units	8
R-410A Combination table	9
Specifications	
• Indoor units	10
• Outdoor Units	20
Accessories	22
Control Systems	24



Multi Model applications

Air conditioning - creating a sense of well-being

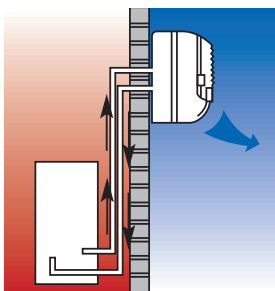
Air conditioning has become part of our daily life, providing comfort everywhere - at home, in shops, restaurants, offices and hotels. In fact, it's hard to imagine life without it. Air conditioning generates that pleasant feeling associated with an atmosphere that is close to the ideal.

Air conditioning supplies pure cool air when it's hot outside. In winter or those cooler periods during spring and autumn, the heat pump can provide either cooling or heating.

Daikin air conditioning provides year round comfort and wellbeing for residential, commercial and industrial applications alike.

The basic facts about air conditioning:

cooling operation



outdoors indoors

- **Air conditioning for cooling**

Air conditioning works like a domestic refrigerator, continuously removing heat from the cabinet and discharging it into the kitchen. This 'free' heat can be experienced by touching the coil on the back of the refrigerator.

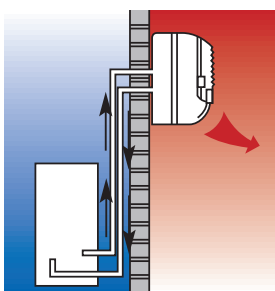
The principle of air conditioning is exactly the same.

A split system comprises an indoor and an outdoor unit, connected together by small copper tubing.

In summer, the indoor unit extracts heat from the room and exhausts it via the outdoor unit outside.

The indoor unit distributes cool air into the room, preventing unpleasant draughts and ensuring that the home remains cool and comfortable.

heating operation



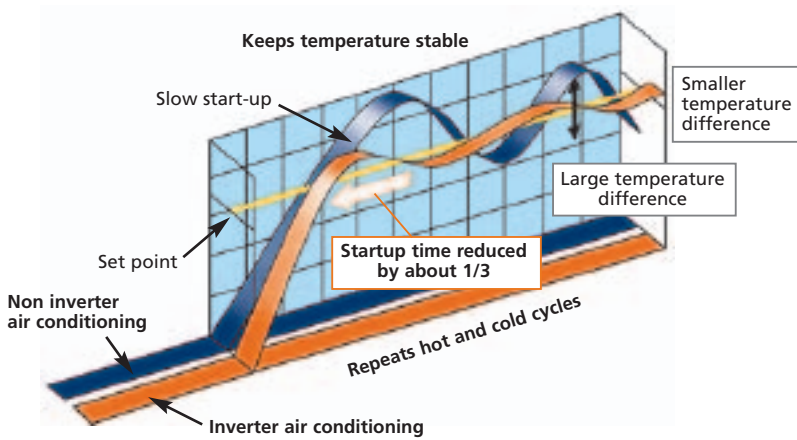
outdoors indoors

- **Air conditioning for heating**

In winter, the reverse occurs. Natural heat, which is present in the outdoor air - even when it's freezing - is extracted and transferred indoors. Air conditioners that are able to heat and cool are known as heat pump systems. A heat pump cuts down on the use of a traditional central heating, allowing it to be switched off, possibly completely during spring and autumn.

- **Inverter technology**

The use of integrated inverter control ensures maximum **energy efficiency** by supplying only the required heating or cooling load where a standard non inverter unit would supply maximum load in an on/off regime.



The rapid start up time provided by the inverter increases **comfort** by reducing the lead time in obtaining the required indoor temperature. Once the required temperature is reached, the inverter unit continuously scans the room for small changes and adjusts the room temperature in seconds, thereby increasing comfort once again.

The benefits of a **Multi system**

- **Air conditioning in every room**

A Multi system allows up to 5 indoor units to operate off a single outdoor unit, thereby reducing installation space and costs. All indoor units can be individually controlled and do not need to be installed at the same time - extra units (up to a maximum of 5) can be added later.



- **The widest choice**

Different types of indoor units — wall mounted, concealed ceiling, floor standing etc - in different capacities can be mixed together in Multi system applications. Thus the ideal indoor unit can be selected for the bedroom, living room, office or wherever, according to the installation surface or personal requirements.



- **An ideal indoor climate**

A single outdoor unit can cool down or heat up a complete house, office or small shop at different times. A pleasant climate can be enjoyed whilst working at the desk in the afternoon, as well as a constant temperature in the living room and cool bedrooms in the evening.



Indoor units

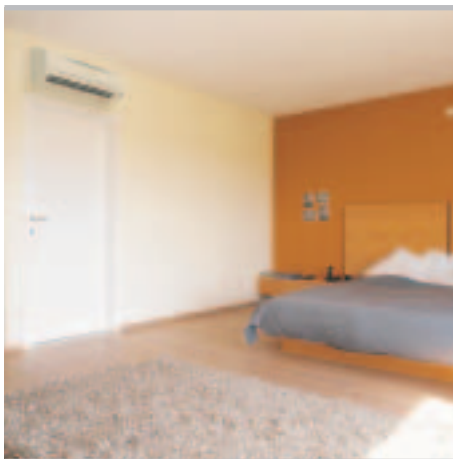
for residential use

Daikin air conditioning introduces summer freshness and winter warmth into your home. Creating a perfect balance between temperature, humidity, purity and air movement... Daikin air conditioning is the modern, cost effective route to indoor comfort throughout the year.



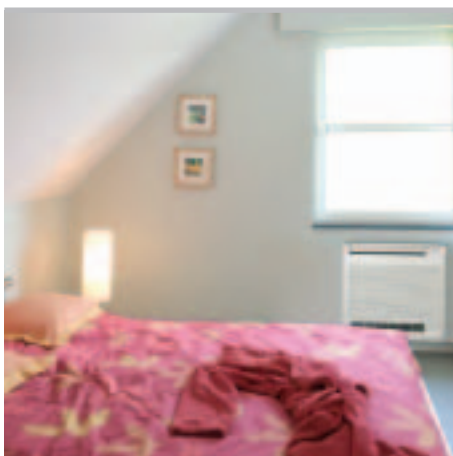
< Wall mounted unit

Wall mounted unit >



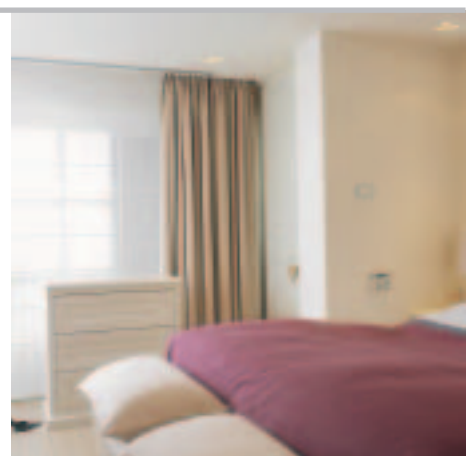
< Wall mounted unit

Flexi type unit >
(ceiling suspended application)



< Floor standing unit

Slim concealed
ceiling unit >



Indoor units

for small commercial use

In offices, hotels, department stores and most other commercial premises Daikin air conditioning improves the indoor environment and creates a basis for increased business prosperity – efficiently, economically and discreetly.



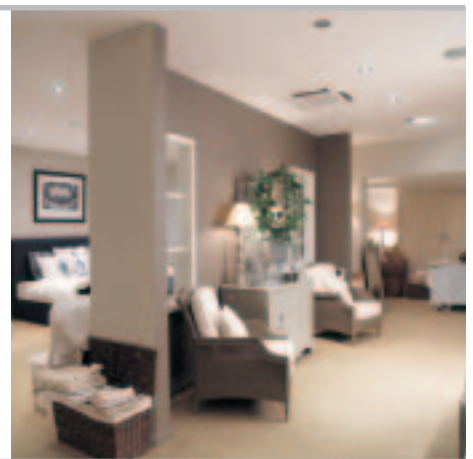
< Concealed ceiling unit (for hotel application)

Concealed ceiling unit >



< 4-way blow ceiling mounted cassette




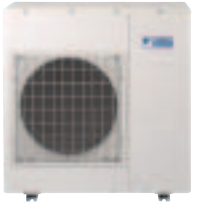

4-way blow ceiling mounted cassette >
(600mm x 600mm)



< Ceiling suspended unit

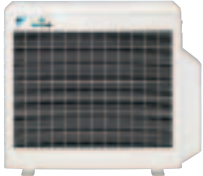
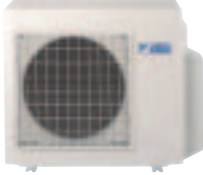

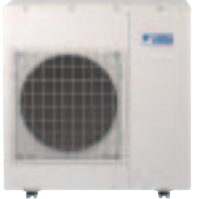

Possible outdoor models

OUTDOOR UNITS - cooling only

Maximum number of indoor units		2	3	4	5
2MKS~D		X			
3MKS~E			X		
4MKS~E	 			X	
5MKS~E					X



OUTDOOR UNITS - heat pump

Maximum number of indoor units		2	3	4	5
2MXS~D*		X			
3MXS~E*			X		
4MXS~E*	 			X	
5MXS~E*					X

* Note: At least 2 indoor units should be connected to this Multi outdoor unit.

R-410A combination table

			2MKS40D	3MKS50E	4MKS58E	4MKS75E	5MKS90E	2MXS40D	2MXS52E	3MXS52E	4MXS68E	4MXS80E	5MXS90E		
Wall mounted unit	Cooling only	FTKS20DW	X	X	X	X	X								
		FTKS20DL	X	X	X	X	X								
		FTKS25DW	X	X	X	X	X								
		FTKS25DL	X	X	X	X	X								
		FTKS35DW	X	X	X	X	X								
		FTKS35DL	X	X	X	X	X								
		FTKS50DW			X	X	X								
		FTKS50DL			X	X	X								
		FTKS20C	X	X	X	X	X								
		FTKS25C	X	X	X	X	X								
		FTKS35C	X	X	X	X	X								
		FTKS50E			X	X	X								
		FTKS60E				X	X								
		FTKS71E				X	X								
		Wall mounted unit	Heat pump	FTXG25E-W						X	X	X	X	X	X
				FTXG25E-S						X	X	X	X	X	X
				FTXG35E-W						X	X	X	X	X	X
FTXG35E-S								X	X	X	X	X	X		
CTXG50E-W									X	X	X	X	X		
CTXG50E-S									X	X	X	X	X		
FTXS20DW							X	X	X	X	X	X	X		
FTXS20DL							X	X	X	X	X	X	X		
FTXS25DW							X	X	X	X	X	X	X		
FTXS25DL							X	X	X	X	X	X	X		
FTXS35DW							X	X	X	X	X	X	X		
FTXS35DL							X	X	X	X	X	X	X		
FTXS50DW							X	X	X	X	X	X	X		
FTXS50DL							X	X	X	X	X	X	X		
FTXS20C							X	X	X	X	X	X	X		
FTXS25C							X	X	X	X	X	X	X		
FTXS35C							X	X	X	X	X	X	X		
FTXS50E						X	X	X	X	X	X				
FTXS60E							X	X	X	X	X				
FTXS71E									X	X	X				
Flexi type unit	Cooling only	FLKS25B	X	X	X	X	X								
		FLKS35B	X	X	X	X	X								
		FLKS50B			X	X	X								
	Heat pump	FLXS25B						X	X	X	X	X	X		
		FLXS35B						X	X	X	X	X	X		
		FLXS50B							X	X	X	X	X		
Floor standing unit	Cooling only	FVKS25B		X	X	X	X								
		FVKS35B		X	X	X	X								
		FVKS50B			X	X	X								
	Heat pump	FVXS25B						X	X	X	X	X	X		
		FVXS35B						X	X	X	X	X	X		
		FVXS50B						X	X	X	X	X	X		
Slim concealed ceiling unit	Cooling only	FDKS25E	X	X	X	X	X								
		FDKS35E	X	X	X	X	X								
		FDKS50C			X	X	X								
	Heat pump	FDXS25E						X	X	X	X	X	X		
		FDXS35E						X	X	X	X	X	X		
		FDXS50C							X	X	X	X	X		
Concealed ceiling unit	Dual use	FDBQ25B			X	X	X		X	X	X	X	X		
		FBQ35B			X	X	X		X	X	X	X	X		
		FBQ50B			X	X	X		X	X	X	X	X		
		FBQ60B			X	X	X			X	X	X	X		
4-way blow ceiling mounted cassette (950x950)	Dual use	FCQ35B			X	X	X		X	X	X	X	X		
		FCQ50B			X	X	X		X	X	X	X	X		
		FCQ60B			X	X	X			X	X	X	X		
4-way blow ceiling mounted cassette (600x600)	Dual use	FFQ25B			X	X	X		X	X	X	X	X		
		FFQ35B			X	X	X		X	X	X	X	X		
		FFQ50B			X	X	X		X	X	X	X	X		
Ceiling suspended unit	Dual use	FHQ35B			X	X	X		X	X	X	X	X		
		FHQ50B			X	X	X		X	X	X	X	X		
		FHQ60B			X	X	X			X	X	X	X		

Specifications

Indoor units



FTXG-E & CTXG-E



Wall mounted unit



Comfort

- Stylish and modern design
- Available in 2 colour variations
- Comfort mode reassures draught free operation
- Extremely quiet in operation

Filter

- Titanium apatite photocatalytic air purification filter powerfully absorbs microscopic particles, decomposes odours and even deactivates bacteria and viruses.

Energy efficient

- ECONO mode decreases the power consumption so that other appliances that need large power consumption can be used.
- Movement sensor automatically saves power consumption in unoccupied rooms

HEAT PUMP (air cooled)				FTXG25E-W/S	FTXG35E-W/S	CTXG50E-W/S
Dimensions	HxWxD		mm	275x840x150		
Weight			kg	9		
Front panel colour				mat crystal white & mat crystal silver		
Air flow rate	cooling	H/L/SL	m ³ /min	7.7/4.7/3.8	8.1/4.9/4.1	11.3/7.1/6.7
	heating	H/L/SL	m ³ /min	9.0/6.7/5.4	9.6/6.7/5.9	12.6/8.7/7.7
Fan speed			steps	5 steps, silent and auto		
Sound pressure level	cooling	H/L/SL	dB(A)	38/25/22	39/26/23	47/35/32
	heating	H/L/SL	dB(A)	38/28/25	39/29/26	47/35/32
Sound power level	cooling	H	dB(A)	56	57	64
Piping connections	liquid		mm	ø6.4		
	gas		mm	ø9.5		ø12.7
	drain		mm	ø18.0		
Heat insulation				both liquid and gas pipes		
Power supply			V1	1~, 220-240V, 50Hz		
Infrared remote control				ARC433A41		

FTK/XS-D



Wall mounted unit



Comfort

- Available in 2 colour variations
- Comfort mode reassures draught free operation
- Extremely quiet in operation

Filter

- Titanium apatite photocatalytic air purification filter powerfully absorbs microscopic particles, decomposes odours and even deactivates bacteria and viruses

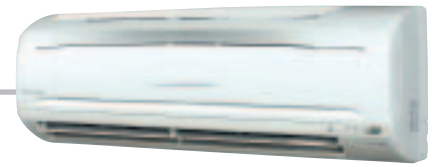
Energy efficient

- ECONO mode decreases the power consumption so that other appliances that need large power consumption can be used
- Movement sensor automatically saves power consumption in unoccupied rooms

COOLING ONLY (air cooled)			FTKS20DW/L	FTKS25DW/L	FTKS35DW/L	FTKS50DW/L
Dimensions	HxWxD	mm	283x800x195			
Weight		kg	9			
Front panel colour			white + white top (W) or white + silver top (L)			
Air flow rate	H/L/SL	m ³ /min	8.7/4.7/3.9	8.7/4.7/3.9	8.9/4.9/4.0	11.4/7.1/6.2
Fan speed		steps	5 steps, silent and auto			
Sound pressure level	H/L/SL	dB(A)	38/25/22	38/25/22	39/26/23	46/35/32
Sound power level	H	dB(A)	56	56	57	62
Piping connections	liquid	mm	ø6.4			
	gas	mm	ø9.5			ø12.7
	drain	mm	ø18.0			
Heat insulation			both liquid and gas pipes			
Power supply		VM	1~, 220-240/220-230V, 50/60Hz			
Infrared remote control			ARC433A43			

HEAT PUMP (air cooled)			FTXS20DW/L	FTXS25DW/L	FTXS35DW/L	FTXS50DW/L	
Dimensions	HxWxD	mm	283x800x195				
Weight		kg	9				
Front panel colour			white + white top (W) or white + silver top (L)				
Air flow rate	cooling	H/L/SL	m ³ /min	8.7/4.7/3.9	8.7/4.7/3.9	8.9/4.8/4.0	11.4/7.1/6.2
	heating	H/L/SL	m ³ /min	9.4/5.8/5.0	9.4/5.8/5.0	9.7/6.0/5.2	11.4/7.4/6.3
Fan speed		steps	5 steps, silent and auto				
Sound pressure level	cooling	H/L/SL	dB(A)	38/25/22	38/25/22	39/26/23	46/35/32
	heating	H/L/SL	dB(A)	38/28/25	38/28/25	39/29/26	46/34/31
Sound power level	cooling	H	dB(A)	56	56	57	62
Piping connections	liquid	mm	ø6.4				
	gas	mm	ø9.5			ø12.7	
	drain	mm	ø18.0				
Heat insulation			both liquid and gas pipes				
Power supply		VM	1~, 220-240/220-230V, 50/60Hz				
Infrared remote control			ARC433A50				

FTK/XS-C/E



Wall mounted unit



Comfort

- C-serie: dual air discharge flow for better air distribution
- E-serie: 3-D air flow makes sure that a uniform temperature is achieved throughout the room
- Extremely quiet in operation

Filter

- Air purification filter with photocatalytic deodorising function absorbs microscopic particles, decomposes odours and even deactivates bacteria and viruses

Energy efficient

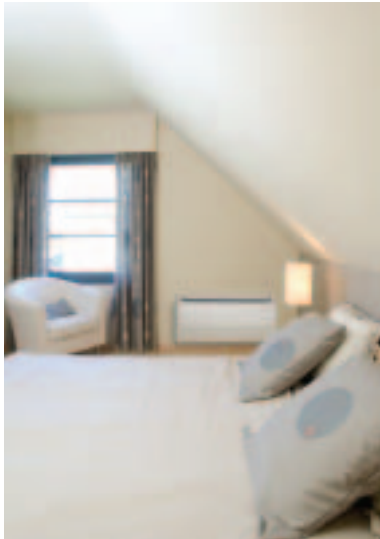
- Home leave operation saves energy during absence
- Movement sensor automatically saves power consumption in unoccupied rooms

COOLING ONLY (air cooled)			FTKS20C	FTKS25C	FTKS35C	FTKS50E	FTKS60E	FTKS71E
Dimensions	HxWxD	mm	273x784x195			290x1,050x238		
Weight		kg	7.5	7.5	7.5	12		
Front panel colour			white					
Air flow rate	H/L/SL	m ³ /min	7.7/4.2/3.6	7.7/4.2/3.6	7.7/4.4/3.8	14.7/10.3/9.5	16.2/11.4/10.2	16.7/11.6/10.6
Fan speed		steps	5 steps, silent and auto					
Sound pressure level	H/L/SL	dB(A)	38/25/22	38/25/22	39/26/23	43/34/31	45/36/33	46/37/34
Sound power level	H	dB(A)	56	56	57	59	61	63
Piping connections	liquid	mm	ø6.4			ø6.4		
	gas	mm	ø9.5			ø12.7	ø15.9	
	drain	mm	ø18.0			ø18.0		
Heat insulation			both liquid and gas pipes					
Power supply	VM/V1		1~, 220-240/220-230V, 50/60Hz			1~, 220-240, 50Hz		
Infrared remote control			ARC433A2			ARC433A22		

HEAT PUMP (air cooled)			FTXS20C	FTXS25C	FTXS35C	FTXS50E	FTXS60E	FTXS71E
Dimensions	HxWxD	mm	273x784x195			290x1,050x238		
Weight		kg	7.5	7.5	7.5	12		
Front panel colour			white					
Air flow rate	cooling	H/L/SL	7.7/4.2/3.6	7.7/4.2/3.6	7.7/4.4/3.8	14.7/10.3/9.5	16.2/11.4/10.2	16.7/11.6/10.6
	heating	H/L/SL	7.8/5.3/4.6	7.8/5.3/4.6	8.1/5.3/4.6	16.1/11.5/10.2	17.4/12.7/11.4	18.5/13.5/12.1
Fan speed		steps	5 steps, silent and auto					
Sound pressure level	cooling	H/L/SL	38/25/22	38/25/22	39/26/23	43/34/31	45/36/33	46/37/34
	heating	H/L/SL	38/28/25	38/28/25	39/29/26	42/33/30	44/35/32	46/37/34
Sound power level	cooling	H	56	56	57	59	61	63
Piping connections	liquid	mm	ø6.4			ø6.4		
	gas	mm	ø9.5			ø12.7	ø15.9	
	drain	mm	ø18.0			ø18.0		
Heat insulation			both liquid and gas pipes					
Power supply	VM/V1		1~, 220-240/220-230V, 50/60Hz			1~, 220-240, 50Hz		
Infrared remote control			ARC433A1			ARC433A21	ARC433A2133	

FLK/XS-B

Flexi type unit



Comfort

- Vertical auto swing and wide angle louvers ensure that warm air reaches the furthest corners of a room and increase the air flow coverage
- Extremely quiet in operation

Filter

- Air purification filter with photocatalytic deodorising function absorbs microscopic particles, decomposes odours and even deactivates bacteria and viruses

Energy efficient

- Home leave operation saves energy during absence

Flexible installation

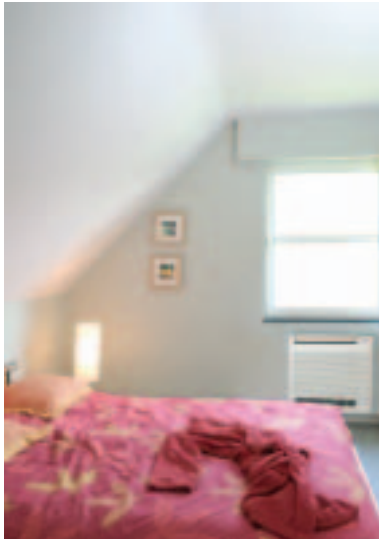
- Allows both ceiling suspended as floor level installation

COOLING ONLY (air cooled)			FLKS25B	FLKS35B	FLKS50B	FLKS60B
Dimensions	HxWxD	mm	490x1,050x200			
Weight		kg	16	16	17	17
Front panel colour			almond white			
Air flow rate	H/L/SL	m ³ /min	7.6/6.0/5.2	8.6/6.6/5.6	11.4/8.5/7.5	12.0/9.3/8.3
Fan speed		steps	5 steps, silent and auto			
Sound pressure level	H/L/SL	dB(A)	37/31/28	38/32/29	47/39/36	48/41/39
Sound power level	H	dB(A)	53	54	63	64
Piping connections	liquid	mm	ø6.4			
	gas	mm	ø9.5		ø12.7	
	drain	mm	ø18.0			
Heat insulation			both liquid and gas pipes			
Power supply		VM	1~, 220-240/220-230V, 50/60Hz			
Infrared remote control			ARC433A6			

HEAT PUMP (air cooled)			FLXS25B	FLXS35B	FLXS50B	FLXS60B
Dimensions	HxWxD	mm	490x1,050x200			
Weight		kg	16	16	17	17
Front panel colour			almond white			
Air flow rate	cooling	H/L/SL	7.6/6.0/5.2	8.6/6.6/5.6	11.4/8.5/7.5	12.0/9.3/8.3
	heating	H/L/SL	9.2/7.4/6.6	9.8/8.0/7.2	12.1/7.5/6.8	12.8/8.4/7.5
Fan speed		steps	5 steps, silent and auto			
Sound pressure level	cooling	H/L/SL	37/31/28	38/32/29	47/39/36	48/41/39
	heating	H/L/SL	37/31/29	39/33/30	46/35/33	47/37/34
Sound power level	cooling	H	53	54	63	64
Piping connections	liquid	mm	ø6.4			
	gas	mm	ø9.5		ø12.7	
	drain	mm	ø18.0			
Heat insulation			both liquid and gas pipes			
Power supply		VM	1~, 220-240/220-230V, 50/60Hz			
Infrared remote control			ARC433A5			

FVK/XS-B

Floor standing unit



Comfort

- Vertical auto swing and wide angle louvers ensure that warm air reaches the furthest corners of a room and increase the air flow coverage
- Extremely quiet in operation

Filter

- Air purification filter and photocatalytic deodorising filter absorb microscopic particles, decompose odours and even deactivate bacteria and viruses

Energy efficient

- Home leave operation saves energy during absence

Flexible installation

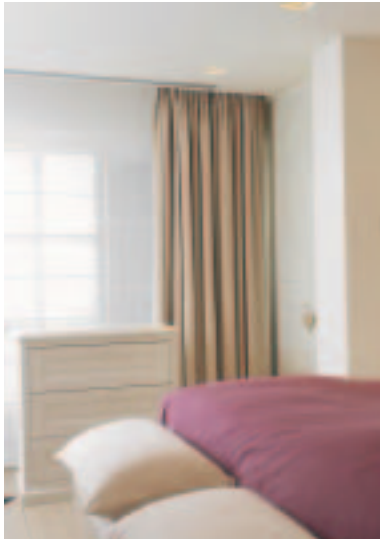
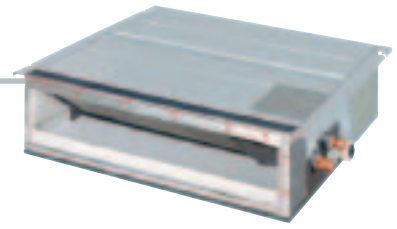
- Can be used for floor standing or lower wall applications
- As a floor standing model, it can be semi or fully recessed without loss of capacity

COOLING ONLY (air cooled)			FVKX25B	FVKX35B	FVKX50B
Dimensions	HxWxD	mm	600x650x195		
Weight		kg	13	13	13
Front panel colour			almond white		
Air flow rate	H/L/SL	m ³ /min	8.1/4.3/3.4	8.3/4.3/3.4	10.8/7.7/6.7
Fan speed		steps	5 steps, silent and auto		
Sound pressure level	H/L/SL	dB(A)	38/26/23	39/27/24	44/36/33
Sound power level	H	dB(A)	54	55	56
Piping connections	liquid	mm	ø6.4		
	gas	mm	ø9.5		ø12.7
	drain	mm	ø18.0		ø20.0
Heat insulation			both liquid and gas pipes		
Power supply		VM	1~, 220-240/220-230V, 50/60Hz		
Infrared remote control			ARC433A6		

HEAT PUMP (air cooled)			FVXS25B	FVXS35B	FVXS50B
Dimensions	HxWxD	mm	600x650x195		
Weight		kg	13	13	13
Front panel colour			almond white		
Air flow rate	cooling	H/L/SL	8.1/4.3/3.4	8.3/4.3/3.4	10.8/7.7/6.7
	heating	H/L/SL	9.2/4.8/3.5	9.2/5.0/3.6	13.2/9.4/8.3
Fan speed		steps	5 steps, silent and auto		
Sound pressure level	cooling	H/L/SL	38/26/23	39/27/24	44/36/33
	heating	H/L/SL	38/26/23	39/29/26	45/36/33
Sound power level	cooling	H	54	55	56
Piping connections	liquid	mm	ø6.4		
	gas	mm	ø9.5		ø12.7
	drain	mm	ø18.0		ø20.0
Heat insulation			both liquid and gas pipes		
Power supply		VM	1~, 220-240/220-230V, 50/60Hz		
Infrared remote control			ARC433A5		

FDK/XS-E/C

Slim concealed ceiling unit



Comfort

- Leaves maximum floor and wall space for furniture, decoration and fittings
- Extremely quiet in operation

Filter

- Standard suction filter removes airborne dust particles to ensure a steady supply of clean air

Energy efficient

- Home leave operation saves energy during absence

Flexible installation

- Can easily be installed in rooms with a false ceiling of only 240mm depth
- A standard external static pressure (ESP) of 40Pa, makes it possible to use flexible ducts of varying lengths

COOLING ONLY (air cooled)

			FDKS25E	FDKS35E	FDKS50C	FDKS60C
Dimensions	HxWxD	mm	200x700x620		200x900x620	200x1,100x620
Weight		kg	21		27	30
Fan speed		steps	5 steps, silent and auto			
Air flow rate	H/L/SL	m ³ /min	8.7/7.3/6.2	8.7/7.3/6.2	12.0/10.0/8.4	16.0/13.5/11.2
Sound pressure level	H/L/SL	dB(A)	35/31/29	35/31/29	37/33/31	38/34/32
Sound power level	H	dB(A)	53	53	55	56
Piping connections	liquid	mm	ø6.4			
	gas	mm	ø9.5		ø12.7	
	drain	ID	ø20.0			
		OD	ø26.0			
Heat insulation		both liquid and gas pipes				
Power supply	V1/VM		1~, 220-240V, 50Hz		1~, 220-240/220-230V, 50/60Hz	
Infrared remote control			ARC433A8			

HEAT PUMP (air cooled)

			FDXS25E	FDXS35E	FDXS50C	FDXS60C
Dimensions	HxWxD	mm	200x700x620		200x900x620	200x1,100x620
Weight		kg	21		27	30
Fan speed		steps	5 steps, silent and auto			
Air flow rate	cooling	H/L/SL	8.7/7.3/6.2	8.7/7.3/6.2	12.0/10.0/8.4	16.0/13.5/11.2
	heating	H/L/SL	8.7/7.3/6.2	8.7/7.3/6.2	12.0/10.0/8.4	16.0/13.5/11.2
Sound pressure level	cooling	H/L/SL	35/31/29	35/31/29	37/33/31	38/34/32
	heating	H/L/SL	35/31/29	35/31/29	37/33/31	38/34/32
Sound power level	cooling	H	53	53	55	56
Piping connections	liquid	mm	ø6.4			
	gas	mm	ø9.5		ø12.7	
	drain	ID	ø20.0			
		OD	ø26.0			
Heat insulation		both liquid and gas pipes				
Power supply	V1/VM		1~, 220-240V, 50Hz		1~, 220-240/220-230V, 50/60Hz	
Infrared remote control			ARC433A7			

FDBQ-B & FBQ-B

Concealed ceiling unit



Comfort

- Leaves maximum floor and wall space for furniture, decoration and fittings
- Blends unobtrusively with any interior décor
- The position of the individual air discharge grilles can be altered, enabling a uniform temperature, even in irregularly shaped rooms
- Optimum air distribution
- Quiet in operation

Energy efficient

- Home leave operation saves energy during absence

Slim design for flexible installation

- Fits flush into narrow ceiling voids
- Only air suction and discharge grilles are visible
- The maximum external static pressure (ESP) is 88Pa for FBQ

HEAT PUMP (air cooled)				FDBQ25B	FBQ35B	FBQ50B	FBQ60B	FBQ71B	
Dimensions	HxWxD		mm	230x652x502	300x700x800		300x1,000x800		
Weight			kg	17	30	31	41	41	
Fan speed			steps	2 steps (direct drive)					
Air flow rate	cooling	H/L	m ³ /min	6.5/5.2	11.5/9	14/10	19/14	19/14	
	heating	H/L	m ³ /min	6.95/5.2	11.5/9	14/10	19/14	19/14	
Sound pressure level	cooling	H/L	dB(A)	35/28	33/29	33/29	34/30	34/30	
	heating	H/L	dB(A)	35/29	33/29	33/29	34/30	34/30	
Sound power level	cooling	H/L	dB(A)	55/49	52/*	53/*	60/*	60/*	
Piping connections	liquid		mm	ø6.4					
	gas		mm	ø9.5		ø12.7			
	drain (VP 20)	ID	mm	ø21.6		ø25.0			
OD		mm	ø27.2		ø32.0				
Heat insulation				both liquid and gas pipes					
Power supply			V1	1~, 230V, 50Hz					
Wired remote control				BRC1D52					
DECORATION PANEL				Not applicable	BYBS45D		BYBS71D		
Dimensions	HxWxD		mm	Not applicable	55x880x500		55x1,100x500		
Weight			kg	Not applicable	3.5		4.5		
Colour				Not applicable	White				

* This information was not available at the time of publication.

FCQ-B

4-way blow ceiling mounted cassette



Comfort

- Air flow distribution for ceiling heights up to 4.2m without loss of capacity
- Quiet in operation
- Equipped with a special draught prevention and anti-ceiling soiling technology
- Choice of 8 air flow distribution patterns

Energy saving

- Home leave operation saves energy during absence

Flexible installation

- Leaves maximum floor and wall space for furniture, decoration and fittings
- Fits flush into false ceilings
- It is possible to use 1 or 2 branches for better air distribution
- Possibility to shut off one or two flaps for easy installation in corners

HEAT PUMP (air cooled)				FCQ35B	FCQ50B	FCQ60B	FCQ71B
Dimensions	HxWxD		mm	230x840x840			
Weight			kg	23			
Fan speed				2 steps (direct drive)			
Air flow rate	cooling	H/L	m ³ /min	14/10	15/11	18/14	18/14
	heating	H/L	m ³ /min	14/10	15/11	18/14	18/14
Fan speed				2 steps (direct drive)			
Sound pressure level	cooling	H/L	dB(A)	31/27	31/27	31/27	33/28
	heating	H/L	dB(A)	31/27	31/27	31/27	33/28
Sound power level	cooling	H	dB(A)	48	48	50	50
Piping connections	liquid			ø6.4			
	gas			ø9.5	ø12.7		
	drain (VP25)	ID	mm	ø25.0			
OD		mm	ø32.0				
Heat installation				both liquid and gas pipes			
Power supply			V1	1~, 230V, 50Hz			
Infrared remote control	cooling only			BRC7C513			
	heat pump			BRC7C512			
Wired remote control				BRC1D52			
DECORATION PANEL				BYC125K			
Dimensions	HxWxD		mm	40x950x950			
Weight			kg	5			
Colour				White			

FFQ-B

4-way blow ceiling mounted cassette
(600mm x 600mm)



Comfort

- Automatic air flow director ensures uniform air flow and temperature distribution
- Excellent low draught characteristics and anti-ceiling soiling technology
- Extremely quiet in operation
- Modern style decoration panel in white (RAL9010)

Energy efficient

- Home leave operation saves energy during absence

Flexible installation and easy to maintain

- Due to the compact casing, it matches standard architectural modules of 600mm x 600mm, therefore ceiling tile cutting is no longer necessary
- Since the switch box is located inside the unit, it is easy to access from below for maintenance without removing ceiling tiles
- Possibility to shut off one or two flaps for easy installation in corners

HEAT PUMP (air cooled)				FFQ25B	FFQ35B	FFQ50B	FFQ60B
Dimensions		HxWxD	mm	286x575x575			
Weight			kg	17.5			
Fan speed				2 steps (direct drive)			
Air flow rate	cooling	H/L	m ³ /min	9/6.5	10/6.5	12/8	15/10
	heating	H/L	m ³ /min	9/6.5	10/6.5	12/8	15/10
Sound pressure level	cooling	H/L	dB(A)	29.5/24.5	32/25	36/27	41/32
	heating	H/L	dB(A)	29.5/24.5	32/25	36/27	41/32
Sound power level	cooling	H		46.5	49	53	58
Piping connections		liquid	mm	ø6.4			
		gas	mm	ø9.5		ø12.7	
		drain	mm	ø20.0			
Heat insulation				both liquid and gas pipes			
Power supply			V1	1 ~, 230V, 50Hz			
Infrared remote control	cooling only			BRC7E531W			
	heat pump			BRC7E530W			
Wired remote control				BRC1D52			
DECORATION PANEL				BYFQ60B			
Dimensions		HxWxD	mm	55x700x700			
Weight			kg	2.7			
Colour				White (RAL9010)			

FHQ-B



Ceiling suspended unit



Comfort

- Air flow distribution for ceiling heights up to 3.8m without loss of capacity
- A comfortable air flow in all directions thanks to an air flow pattern of 100°

Flexible installation and easy to maintain

- The ideal solution for installation without false ceiling since they are installed directly against the ceiling
- The reduced lateral servicing space enables the unit to be easily installed in corners and narrow spaces on walls and ceilings

HEAT PUMP (air cooled)				FHQ35B	FHQ50B	FHQ60B	FHQ71B	
Dimensions		HxWxD	mm	195x960x680		195x1,160x680		
Weight			kg	24	25	27	27	
Casing colour		White						
Fan speed		steps		2 steps				
Air flow rate	cooling	H/L	m ³ /min	13/10	13/10	17/13	17/14	
	heating	H/L	m ³ /min	13/10	13/10	16/13	17/14	
Sound pressure level	cooling	H/L	dB(A)	37/32	38/33	39/33	39/35	
	heating	H/L	dB(A)	37/32	38/33	39/33	39/35	
Sound power level	cooling	H/L	dB(A)	53/48	54/49	55/49	55/51	
Piping connections		liquid		ø6.4				
		gas		ø9.5	ø12.7			
		drain (VP 20)	ID	ø20.0				
			OD	ø26.0				
Heat insulation		both liquid and gas pipes						
Power supply		V1		1~, 230V, 50Hz				
Infrared remote control	cooling only		BRC7E66					
	heat pump		BRC7E63					
Wired remote control		BRC1D52						

Specifications

Outdoor units



MK/XS-D/E



- The Multi model application saves on outside space. The single outdoor unit can stand in the garden against an outside wall, or on the roof or terrace. Thus only enough space for 1 outdoor unit is required. This is aesthetically pleasing and simplifies installation.
- Daikin outdoor units are neat, sturdy and specially anti-corrosion treated to withstand severe weather conditions. They are fitted with a swing compressor, renowned for its low noise and high energy efficiency. Outdoor units are guaranteed not to disturb the peace and quiet of the neighbourhood.
- Multi inverter controlled outdoor units can operate with 2, 3, 4 or even 5 indoor units.

MKS-D/E

MULTI - COOLING ONLY				2MKS40D	3MKS50E	4MKS58E	4MKS75E	5MKS90E
Dimensions	HxWxD	mm		640x685x285	735x936x300			770x900x320
Weight		kg		39	55	55	58	68
Casing colour				ivory white				
Sound pressure level	H/L	dB(A)		47/43	46/*	46/*	48/*	48/45
Sound power level	H	dB(A)		62	59	59	61	62
Compressor	hermetically sealed swing type							
Refrigerant type	R-410A							
Amount of additional charge		kg/m		0.02 (20m or more)	chargeless			0.02 (65m or more)
Maximum piping length	for total of each room	m		30	45	45	60	75
	for one room	m		20	25			
Maximum level difference	between indoor and outdoor	m		15				
	between indoor units	m		7.5			15	
Standard operation range	from~to	°CDB		+10~46				-10~46

MXS-D/E

MULTI - HEAT PUMP				2MXS40D	2MXS52E	3MXS52E	4MXS68E	4MXS80E	5MXS90E
Dimensions	HxWxD	mm		640x685x285	735x936x300			770x900x320	
Weight		kg		39	55	55	59	66	68
Casing colour				ivory white					
Sound pressure level	cooling	H/L	dB(A)	47/43	46/*	46/*	48/*	48/43	52/47
	heating	H/L	dB(A)	48/44	47/*	47/*	49/*	49/45	52/48
Sound power level	cooling	H	dB(A)	62	59	59	61	62	66
Compressor	hermetically sealed swing type								
Refrigerant type	R-410A								
Amount of additional charge		kg/m		0.02 (20m or more)	chargeless			0.02 (30m or more)	
Maximum piping length	for total of each room	m		30	45	45	60	70	75
	for one room	m		20	25				
Maximum level difference	between indoor and outdoor	m		15					
	between indoor units	m		7.5					
Standard operation range	cooling	from~to	°CDB	+10~46				-10~46	
	heating	from~to	°CWB	-10~15.5				-15~15.5	

Accessories

INDOOR UNITS

FTXG-E & CTXG-E	25	35	50
Titanium apatite photocatalytic air purification filter (with frame)		KAF952B41	
Titanium apatite photocatalytic air purification filter (without frame)		KAF952B42	
Anti-theft protection for remote control		KKF917AA4	

FTK/XS-D	20	25	35	50
Titanium apatite photocatalytic air purification filter (without frame)			KAF970AA46	
Anti-theft protection for remote control			KKF917AA4	

FTK/XS-C/E	20	25	35	50	60	71
Air purification filter with photocatalytic deodorising function (with frame)			KAF918A3			
Air purification filter with photocatalytic deodorising function (without frame)			KAF918A44			
Anti-theft protection for remote control			KKF917AA4			

FLK/XS-B	25	35	50	60
Photocatalytic deodorising filter (with frame)		KAZ917BA41		
Photocatalytic deodorising filter (without frame)		KAZ917B2		
Air purification filter (with frame)		KAF925B1		
Air purification filter (without frame)		KAF925B2		
Anti-theft protection for remote control		KKF917AA4		

FVK/XS-B	25	35	50
Photocatalytic deodorising filter (with frame)		KAZ917BA41	
Photocatalytic deodorising filter (without frame)		KAZ917B42	
Air purification filter (with frame)		KAF925B41	
Air purification filter (without frame)		KAF925B42	
Anti-theft protection for remote control		KKF917AA4	

FDK-XS-E/C	25	35	50	60
Anti-theft protection for remote control		KKF917AA4		
Suction grille		KDGF19A45		

FBQ-B	35	50	60	71
Decoration panel		BYBS45D		BYBS71D
Service access panel		KTBJ25K56W		KTBJ25KA80X
High-efficiency filter 65% (colorimetric method)*1		KAFJ252L56		KAFJ252L80
High-efficiency filter 90% (colorimetric method)*1		KAFJ253L56		KAFJ253L80
Filter chamber for bottom suction		KAJ25L56D		KAJ25L80D
Filter chamber for rear suction		KAJ25L56B		KAJ25L80B
Air suction canvas		KSA-25K56		KSA-25K80
Blind board/screening door		KBBJ25K56		KBBJ25KA80
Air discharge adapter for round duct		KDAJ25K56		KDAJ25K71

*1 If installing a high-efficiency filter on the unit, an assembly chamber for either bottom or rear suction is required.

FCQ-B	35	50	60	71
Decoration panel			BYC125K	
High-efficiency filter 65% (colorimetric method)			KAF556DA80	
High-efficiency filter 90% (colorimetric method)			KAF557DA80	
Replacement high-efficiency filter 65% (colorim. method)			KAF552HA80	
Replacement high-efficiency filter 90% (colorim. method)			KAF553HA80	
Filter chamber			KDDF55DA160	
Replacement long-life filter (non-woven type)			KAF551KA160	
Ultra long-life filter			KAF55DA160	
Replacement ultra long-life filter			KAF55KA160H	
Fresh air intake kit	Chamber type	without T-shape & fan	KDD55DA160	
		with T-shape & fan	KDD55DA160F	
		with T-shape, without fan	KDD55DA160K	
	Direct installation type		KDDJ55XA160	
Sealing member of air discharge outlet			KDBHJ55B160	
Panel spacer			KDB55K160WA	
Branch duct chamber			KDJ55BA80	
Chamber connection kit			KKSJ55KA160	

FFQ-B	25	35	50	60
Decoration panel			BYFQ60B	
long-life filter			KAFQ441BA60	
Fresh air intake kit		direct installation type	KDDQ44XA60	
Sealing member of air discharge outlet			KDBH44BA60	
Panel spacer			KDBQ44B60	

FHQ-B	35	50	60	71
Replacement long-life filter		KAF501DA56		KAFJ501DA80
Drain-up kit		KDU50MN60		KDU50MN125
L-type piping kit (upward direction)	KHFP5M35		KHFP5M63	KHFP5MA160

OUTDOOR UNITS

MK/XS-D/E	40 class	50~90 class
Air direction adjustment grille	KPW937A4	KPW945A4

Control systems

INDOOR UNITS

FTXG-E & CTXG-E		25	35	50
Wiring adapter for time clock/ remote control (1)	normal open contact		KRP413A1S	
	normal open pulse contact		KRP413A1S	
Centralised control board	up to 5 rooms (2)		KRC72	
Central remote control			DCS302C51	
Unified ON/OFF control			DCS301B51	
Schedule timer			DST301B51	
Interface adapter (3)			KRP928A2S	

- (1) Wiring adapter is supplied by Daikin. Timer and other devices: field supply.
 (2) Wiring adapter is also required for each indoor unit.
 (3) For DIII-NET adapter

FTK/XS-D		20	25	35	50
Wiring adapter for time clock/ remote control (1)	normal open contact			KRP413A1S	
	normal open pulse contact			KRP413A1S	
Centralised control board	up to 5 rooms (2)			KRC72	
Central remote control				DCS302C51	
Unified ON/OFF control				DCS301B51	
Schedule timer				DST301B51	
Interface adapter (3)				KRP928A2S	

- (1) Wiring adapter is supplied by Daikin. Timer and other devices: field supply.
 (2) Wiring adapter is also required for each indoor unit.
 (3) For DIII-NET adapter

FTK/XS-C/E		20	25	35	50	60	71
Wiring adapter for time clock/ remote control (1)	normal open contact				KRP413A1S		
	normal open pulse contact				KRP413A1S		
Centralised control board	up to 5 rooms (2)				KRC72		
Central remote control					DCS302C51		
Unified ON/OFF control					DCS301B51		
Schedule timer					DST301B51		
Interface adapter (3)					KRP928A2S		

- (1) Wiring adapter is supplied by Daikin. Timer and other devices: field supply.
 (2) Wiring adapter is also required for each indoor unit.
 (3) For DIII-NET adapter

FLK/XS-B		25	35	50	60
Wiring adapter for time clock/ remote control (1)	normal open contact				KRP413A1S
	normal open pulse contact				KRP413A1S
Centralised control board	up to 5 rooms (2)				KRC72
Central remote control					DCS302C51
Unified ON/OFF control					DCS301B51
Schedule timer					DST301B51
Interface adapter (3)					KRP928A2S

- (1) Wiring adapter is supplied by Daikin. Timer and other devices: field supply.
 (2) Wiring adapter is also required for each indoor unit.
 (3) For DIII-NET adapter

FBK/XS-B		25	35	50
Wiring adapter for time clock/ remote control (1)	normal open contact		KRP413A1S	
	normal open pulse contact		KRP413A1S	
Centralised control board	up to 5 rooms (2)		KRC72	
Central remote control			DCS302C51	
Unified ON/OFF control			DCS301B51	
Schedule timer			DST301B51	
Interface adapter (3)			KRP928A2S	

(1) Wiring adapter is supplied by Daikin. Timer and other devices: field supply.

(2) Wiring adapter is also required for each indoor unit.

(3) For DIII-NET adapter

FDK/XS-E/C		25	35	50	60
Wiring adapter for time clock/ remote control (1)	normal open contact		KRP413A1S		
	normal open pulse contact		KRP413A1S		
Centralised control board	up to 5 rooms (2)		KRC72		
Central remote control			DCS302C51		
Unified ON/OFF control			DCS301B51		
Schedule timer			DST301B51		
Interface adapter (3)			KRP928A2S		

(1) Wiring adapter is supplied by Daikin. Timer and other devices: field supply.

(2) Wiring adapter is also required for each indoor unit.

(3) For DIII-NET adapter

FDBQ-B		25
Wired remote control		BRC1D52
Adapter for wiring (hour meter) (1)		EKR1B2
Remote ON/OFF, forced OFF		EKRORO

(1) Possibility to connect an hour meter (field supply). This part should not be installed inside the equipment.

FBQ-B		35	50	60	71
Wired remote control			BRC1D52		
Centralised remote control			DCS302C51		
Unified ON/OFF control			DCS301B51		
Schedule timer			DST301B51		
Adapter for wiring			KRP1B54		
Adapter for external ON/OFF and monitoring			KRP4A51		
Interface adapter for Sky Air			DTA112B51		
Remote ON/OFF, forced OFF			EKRORO		
Option PCB for external electrical heater, humidifier and/or hour meter (1)			EKR1B2		

(1) Electrical heater, humidifier and hour meter are field supply. These parts should not be installed inside the equipment.

FCQ-B	35	50	60	71
Wired remote control				BRC1D52
Infrared remote control		cooling only/heat pump		BRC7C513/BRC7C512
Centralised remote control				DCS302C51
Unified ON/OFF control				DCS301B51
Schedule timer				DST301B51
Electrical box with earth terminal (2 blocks)				KJB212A
Electrical box with earth terminal (3 blocks)				KJB311A
Adapter for external ON/OFF and monitoring				KRP1B57*
Adapter for external ON/OFF and monitoring				KRP4A53*
Adapter for wiring (hour meter) (1)				EKRP1B2*
Interface adapter for Sky Air				DTA112B51
Installation box for adapter PCB (2)				KRP1C98
Remote ON/OFF, forced OFF				EKRORO
Remote sensor				KRCS01-1
Noise filter (for electromagnetic interface use only)				KEK26-1A

- (1) Possibility to connect an hour meter (field supply). This part should not be installed inside the equipment.
(2) Installation box is necessary for each adapter marked with*

FFQ-B	25	35	50	60
Wired remote control				BRC1D52
Infrared remote control		cooling only/heat pump		BRC7E531/BRC7E530
Centralised remote control				DCS302C51
Unified ON/OFF control				DCS301B51
Schedule timer				DST301B51
Adapter for wiring (1)				KRP1B57
Adapter for external ON/OFF and monitoring (1)				KRP4A53
Adapter for wiring (hour meter) (2)				EKRP1B2
Remote sensor				KRCS01-1
Installation box for adapter PCB				KRP1BA101
Interface adapter for Sky Air				DTA112B51
Remote ON/OFF, forced OFF				EKRORO

- (1) Installation box for adapter PCB (KRP1B101) is necessary.
(2) Possibility to connect an hour meter (field supply). This part should not be installed inside the equipment.

FHQ-B	35	50	60	71
Wired remote control				BRC1D52
Infrared remote control		cooling only/heat pump		BRC7E66/BRC7E63
Centralised remote control				DCS302C51
Unified ON/OFF control				DCS301B51
Schedule timer				DST301B51
Adapter for wiring				KRP1B54
Adapter for external ON/OFF and monitoring (1)				KRP4A52
Adapter for wiring (hour meter) (2)				EKRP1B2
Interface adapter for Sky Air				DTA112B51
Installation box for adapter PCB				KRP1C93
Remote ON/OFF, forced OFF				EKRORO

- (1) Installation box for adapter PCB (KRP1C93) is necessary
(2) Possibility to connect an hour meter (field supply). This part should not be installed inside the equipment





In all of us,
a green heart



Daikin's unique position as a manufacturer of air conditioning equipment, compressors and refrigerants has led to its close involvement in environmental issues. For several years Daikin has had the intention to become a leader in the provision of environmental friendly products. This challenge demands the eco design and development of a wide range of products and an energy management system; which involves energy conservation and reduction of waste.



Daikin Europe N.V. is approved by LRQA for its Quality Management System in accordance with the ISO9001 standard.

ISO9001 pertains to quality assurance regarding design, development, manufacturing as well as to services related to the product.



ISO14001 assures an effective environmental management system in order to help protect human health and the environment from the potential impact of our activities, products and services and to assist in maintaining and improving the quality of the environment.



Daikin units comply with the European regulations that guarantee the safety of the product.



Daikin Europe NV participates in the Eurovent Certification Programme for Air Conditioners (AC), Liquid Chilling Packages (LCP) and Fan Coil Units (FC); the certified data of certified models are listed in the Eurovent Directory. Multi units are Eurovent certified for combinations up to 2 indoor units.

"The present catalogue is drawn up by way of information only and does not constitute an offer binding upon Daikin Europe N.V.. Daikin Europe N.V. has compiled the content of this catalogue to the best of its knowledge. No express or implied warranty is given for the completeness, accuracy, reliability or fitness for particular purpose of its content and the products and services presented therein. Specifications are subject to change without prior notice. Daikin Europe N.V. explicitly rejects any liability for any direct or indirect damage, in the broadest sense, arising from or related to the use and/or interpretation of this catalogue. All content is copyrighted by Daikin Europe N.V.."

Daikin products are distributed by:



DAIKIN EUROPE N.V.

Zandvoordestraat 300
B-8400 Oostende, Belgium
www.daikineurope.com

